

BPMR Suntrail Course Paddle

SOUTH SHORE OPTION – TBD with # of safety boats and weather conditions

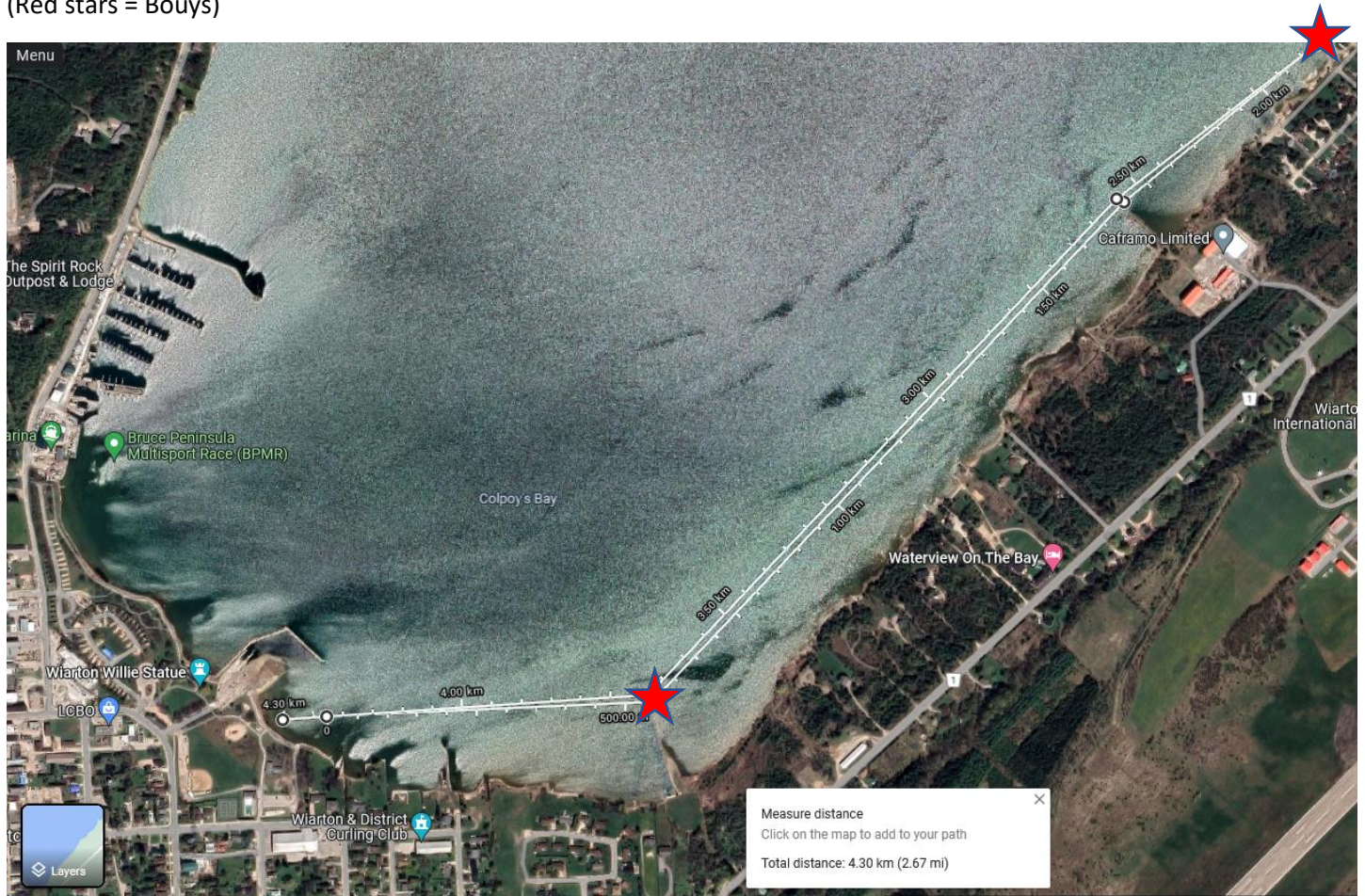
Start / End – Bluewater Park

Dog-Leg @ point off spit next to dredged channel

Turnaround – Bouy offshore where “Lake Road” meets Colpoy’s Bay

Pass between Bouys and Shore.

(Red stars = Bouys)



BPMR Suntrail Course Paddle

NORTH SHORE OPTION TBD with # of safety boats and weather conditions

Start / End – Bluewater Park

Turns outbounds at Marina, breakwall, and inshore corner (Red stars = Bouys)

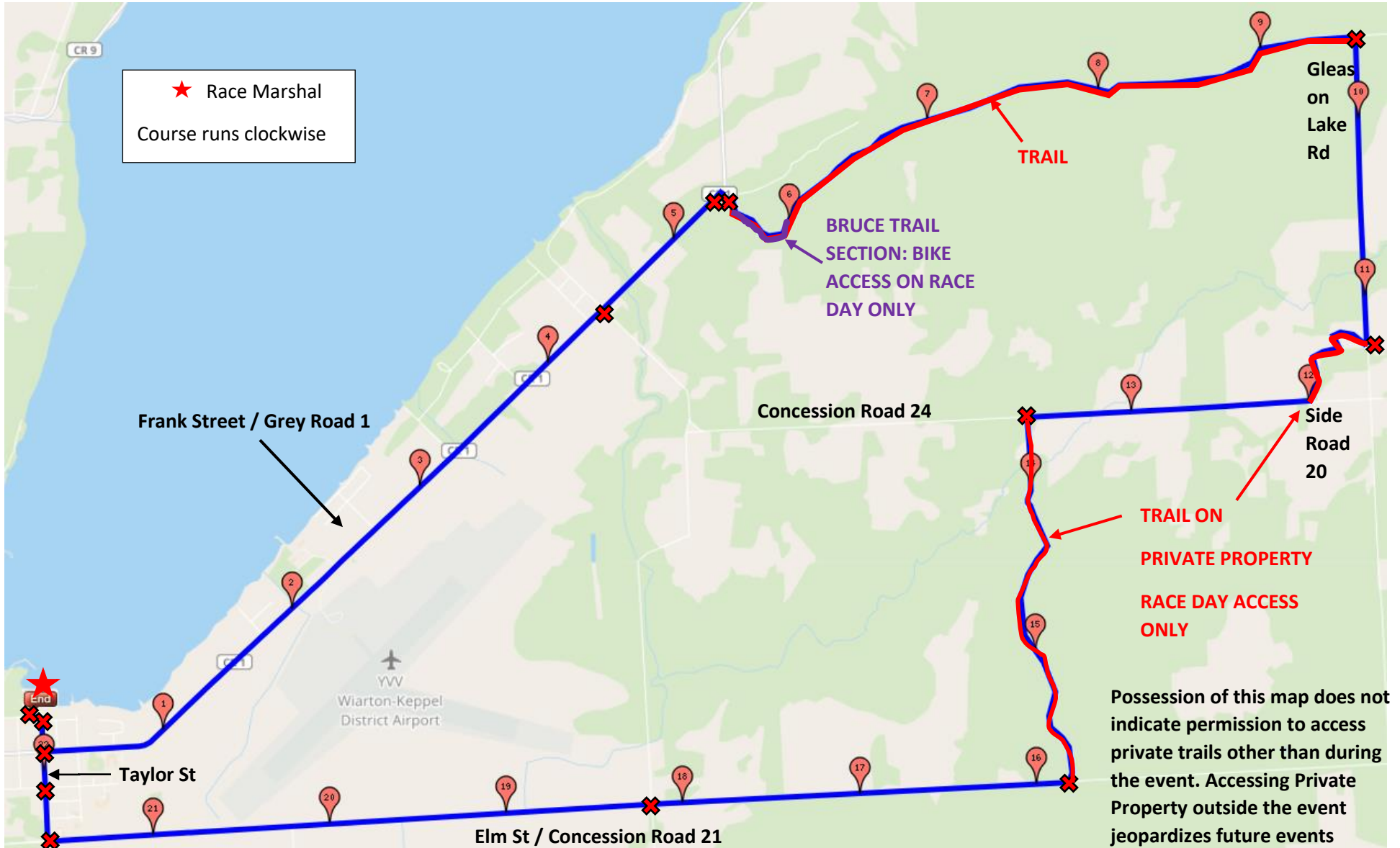
Turnaround point @ 2nd Rock past Water Treatment Plant

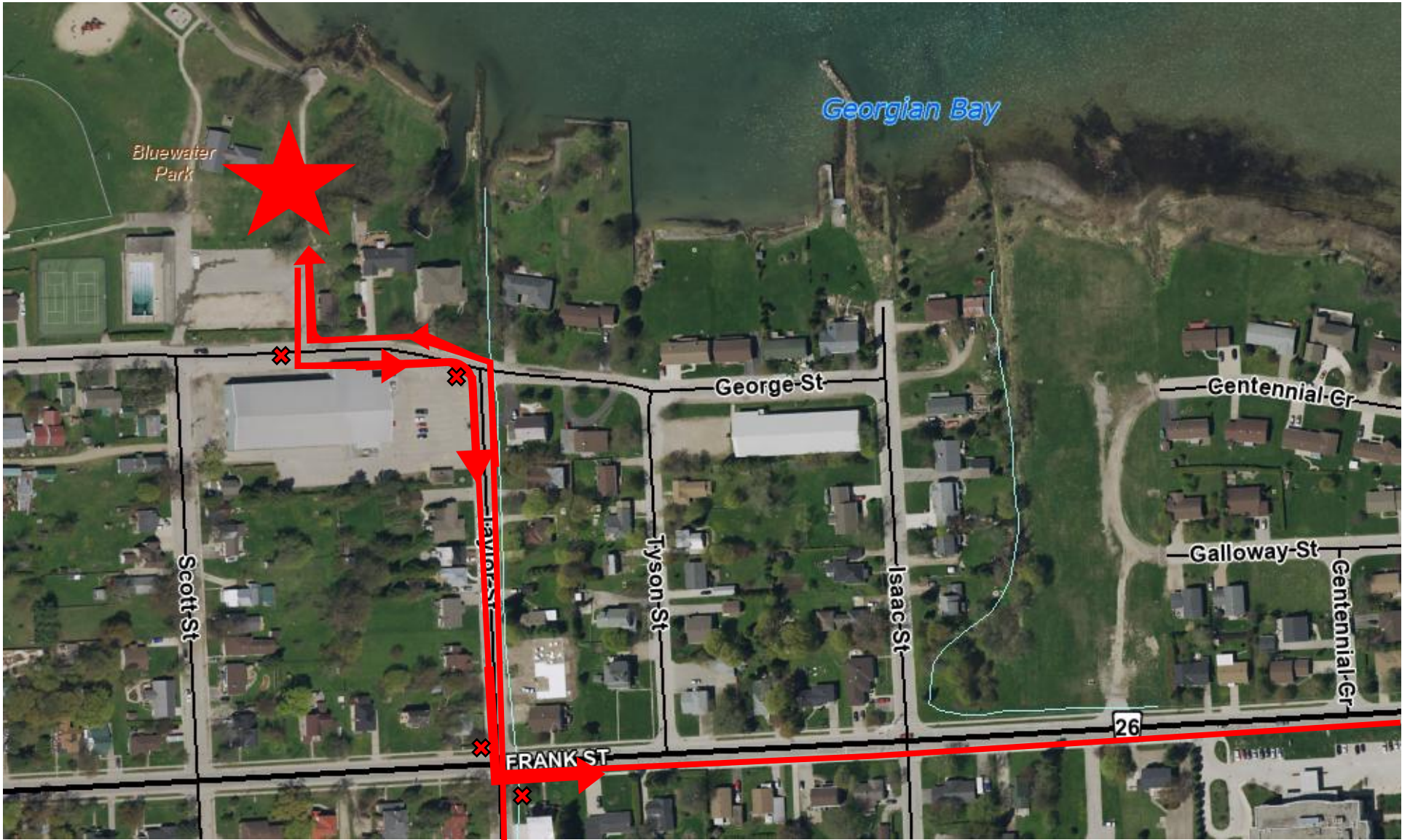
Straight shot back to town dock



BPMR Suntrail Course Bike Ride (22.4km) – Saturday August 10, 2024

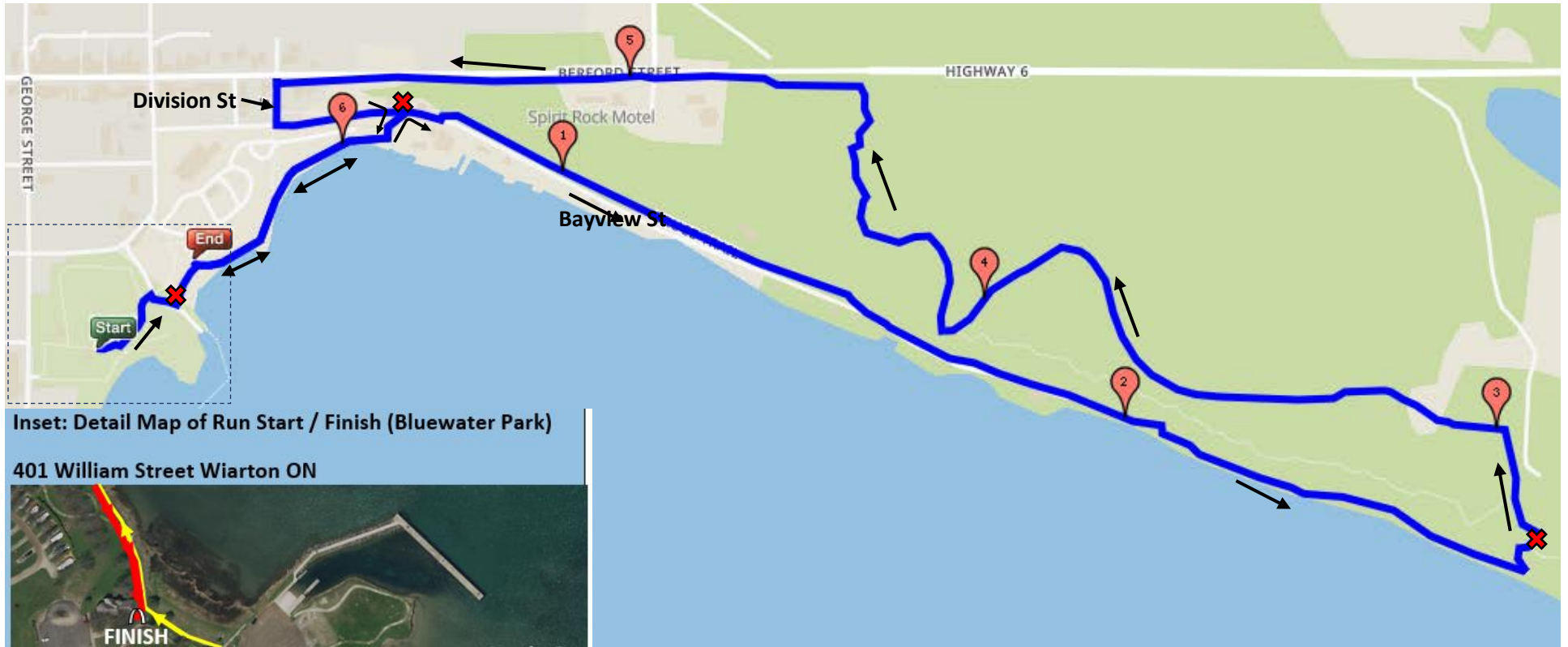
Course Link: <http://www.gmap-pedometer.com/?r=7757516>





BPMR Suntrail Course Run – 6.5 KM - Saturday August 10, 2024

<http://www.gmap-pedometer.com/?r=7599934>



Inset: Detail Map of Run Start / Finish (Bluewater Park)

401 William Street Warton ON



 Race Marshal