

## BPMR Suntrail Course Paddle

**SOUTH SHORE OPTION – TBD with # of safety boats and weather conditions**

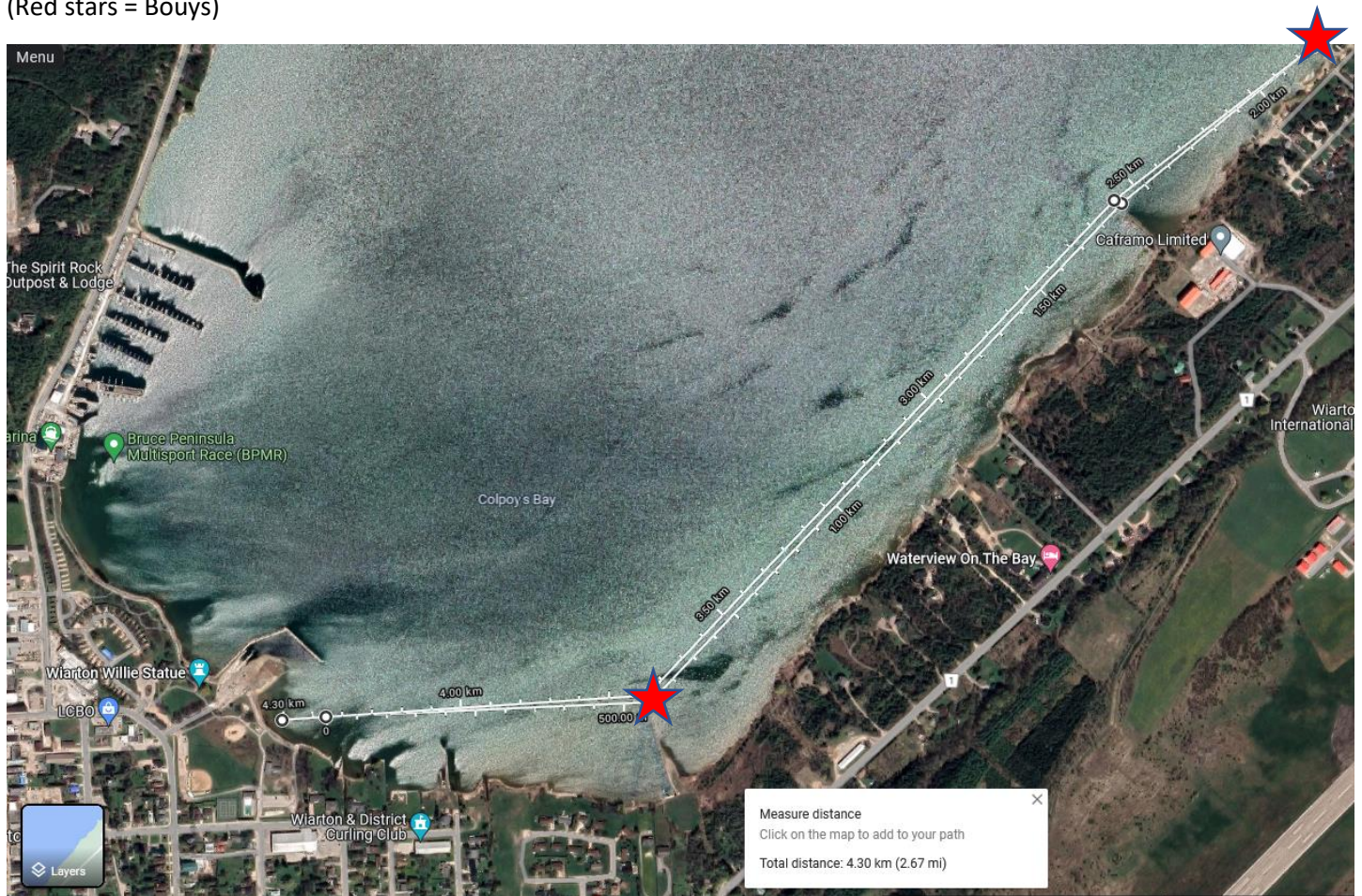
Start / End – Bluewater Park

Dog-Leg @ point off spit next to dredged channel

Turnaround – Bouy offshore where “Lake Road” meets Colpoy’s Bay

Pass between Bouys and Shore.

(Red stars = Bouys)



**BPMR Suntrail Course Paddle**

**NORTH SHORE OPTION TBD with # of safety boats and weather conditions**

Start / End – Bluewater Park

Turns outbounds at Marina, breakwall, and inshore corner (Red stars = Bouys)

Turnaround point @ 2<sup>nd</sup> Rock past Water Treatment Plant

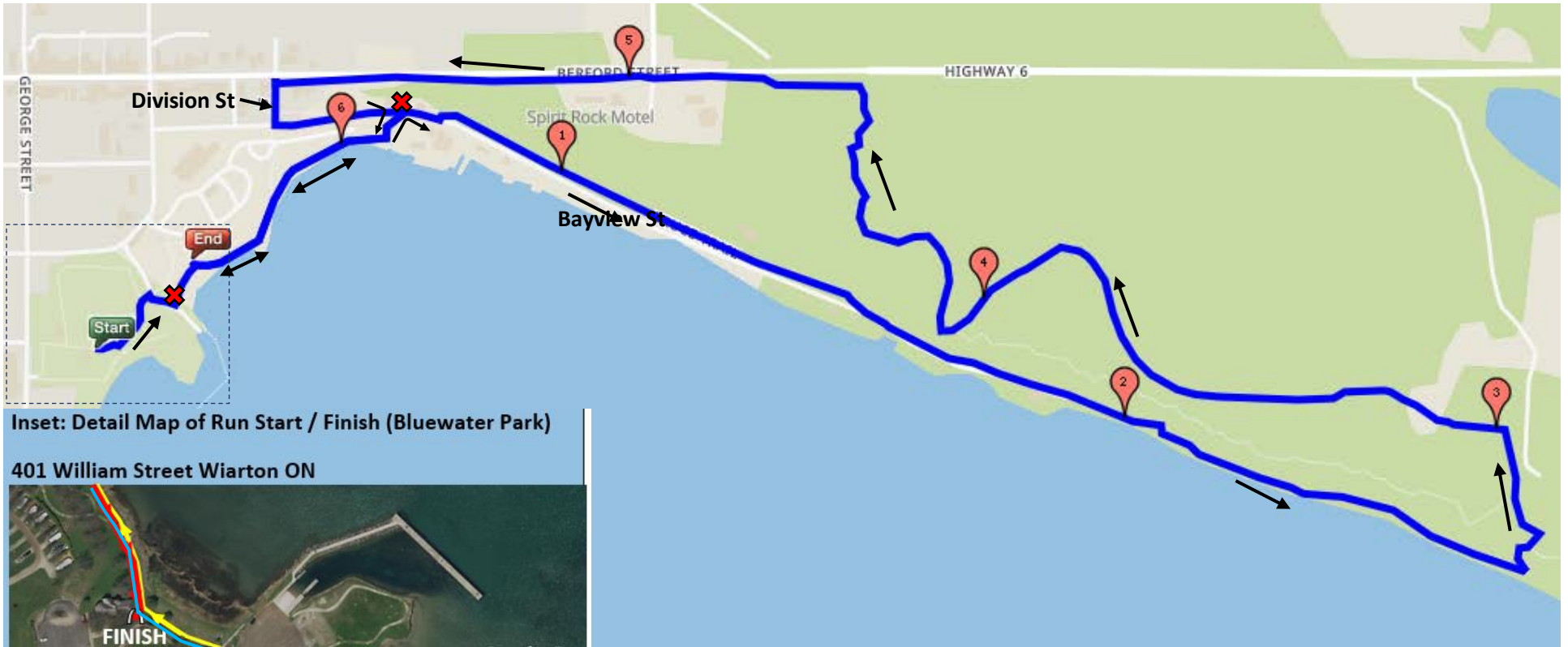
Straight shot back to town dock





BPMR Suntrail Course and Long Course Run #1 – 6.5 KM - Saturday August 12, 2023

<http://www.gmap-pedometer.com/?r=7599934>




Inset: Detail Map of Run Start / Finish (Bluewater Park)

401 William Street Warton ON



- Out to Run 
- In from Run 
- Transition 

Long Course In from Run 

 Race Marshal